

CONTACT US

Please contact us to find out more information or to book an appointment with us



01305 602461



miul.administration@nhs.net



<https://neccare.necsws.com/your-local-provider/dorset/>



NEC Care: Dorset Diabetic eye screening



DOR.NECcare

IMPORTANT TO REMEMBER



Tell us before you come if you need extra help or use a wheelchair



Do Not Drive.

The drops will make your eyes blurry, so not safe to drive afterwards for a few hours



Bring sunglasses.

The eye drops will make your eyes sensitive to light



You can bring somebody with you



The appointment lasts 30-40 minutes



DIABETIC EYE SCREENING

EASY READ GUIDE



Service provided by
NEC NEC Care



01305 602461



miul.administration@nhs.net

WHAT AND WHY?

Diabetic eye screening is a FREE NHS test for people (aged 12yrs and over) who have Diabetes.

People with diabetes have more of a chance of having problems with their eyes and are at risk of sight loss.



We photograph the back of your eyes with special cameras to detect 'diabetic retinopathy'. This is a condition that can lead to sight loss if not treated, and often has no symptoms. Early detection avoids this.

Eye screening is an important part of your diabetes care.

WHAT HAPPENS AT THE CHECK?

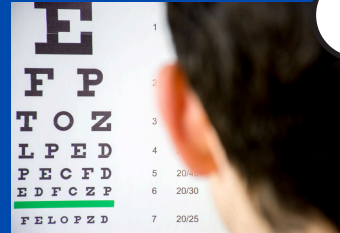
1



Sit in the waiting room. We will call your name when ready

2

We then do some checks and test vision



3



We then pop eye drops in each eye to widen them

4

Sit back in the waiting room for 15 minutes



5



We call you back in and photograph the back of each eye. It is painless and quick. You can then leave

YOUR RESULTS



We send a letter with your results to you and your GP within 3 weeks



You can also see your results through our online portal on our website



If you have no signs of the condition we invite you back in 1 or 2 years



If you have small signs we will ask you to come back sooner for monitoring



We may ask you to see a hospital eye doctor for more significant changes