

## CONTACT US

Please contact us to find out more information or to book an appointment with us



01225 582300



miul.administration@nhs.net



SCAN ME

<https://neccare.necsws.com/your-local-provider/banes-swindon-wiltshire/>



NEC Care: BaNES, Swindon & Wiltshire Diabetic eye screening



BSW.NECcare

## IMPORTANT TO REMEMBER



Tell us before you come if you need extra help or use a wheelchair



### Do Not Drive.

The drops will make your eyes blurry, so not safe to drive afterwards for a few hours



### Bring sunglasses.

The eye drops will make your eyes sensitive to light



You can bring somebody with you



The appointment lasts 30-40 minutes



# DIABETIC EYE SCREENING

## EASY READ GUIDE



Service provided by  
**NEC** NEC Care



01225 582300



miul.administration@nhs.net

# WHAT AND WHY?

Diabetic eye screening is a FREE NHS test for people (aged 12yrs and over) who have Diabetes.

People with diabetes have more of a chance of having problems with their eyes and are at risk of sight loss.



We photograph the back of your eyes with special cameras to detect 'diabetic retinopathy'. This is a condition that can lead to sight loss if not treated, and often has no symptoms. Early detection avoids this.

**Eye screening is an important part of your diabetes care.**

# WHAT HAPPENS AT THE CHECK?

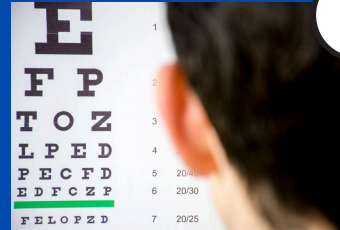
1



Sit in the waiting room. We will call your name when ready

2

We then do some checks and test vision



3



We then pop eye drops in each eye to widen them

4

Sit back in the waiting room for 15 minutes



5

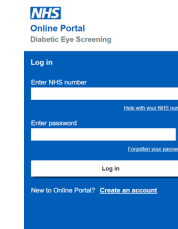


We call you back in and photograph the back of each eye. It is painless and quick. You can then leave

# YOUR RESULTS



We send a letter with your results to you and your GP within 3 weeks



You can also see your results through our online portal on our website



If you have no signs of the condition we invite you back in 1 or 2 years



If you have small signs we will ask you to come back sooner for monitoring



We may ask you to see a hospital eye doctor for more significant changes