

## Trowbridge Health Centre

### **Address:**

Trowbridge Health Centre

Prospect Place

Trowbridge

Wiltshire

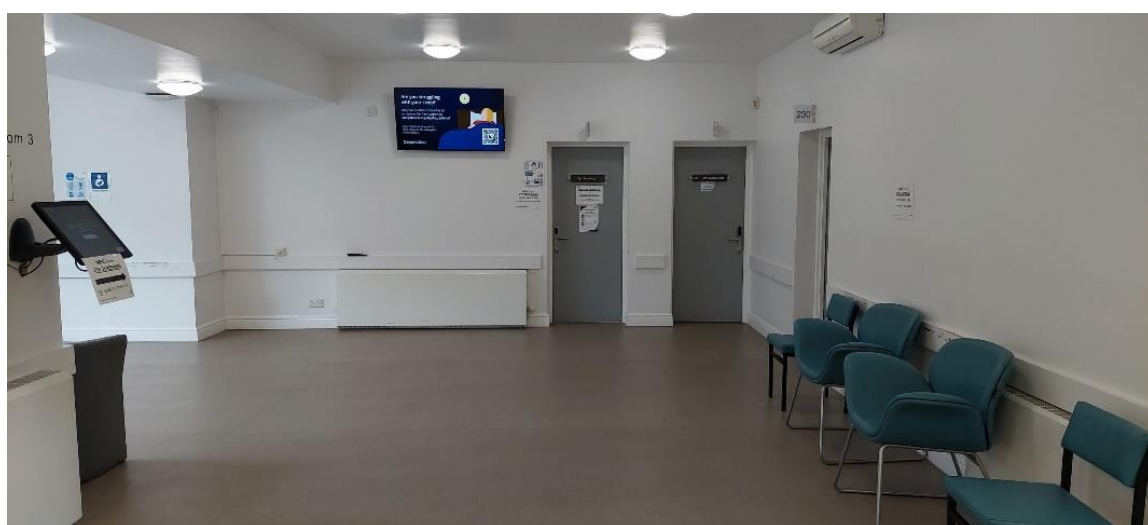
BA14 8QA

### **Entrance:**

Diabetic eye screening at prospect place entrance only (rear car park).



### **Waiting area:**



### **Accessibility:**

- ✓ Disabled parking
  - ✓ Disabled WC
  - ✓ Induction loop
  - ✓ Step free access
  - ✓ Wheelchair access
  - ✓ Car parking
  - ✓ Cycle parking
- 

### **Eye Screening Appointment times**

Morning:

8:30am – 11:40pm

Afternoon:

1:00pm – 3:30pm

If you're looking to book an appointment, please contact our admin team for dates available:



01225 582300



[miul.administration@nhs.net](mailto:miul.administration@nhs.net)

---

### **Bus routes:**

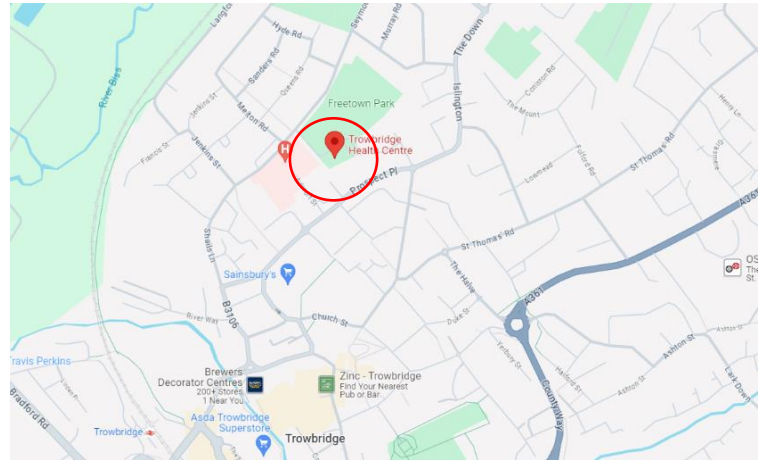
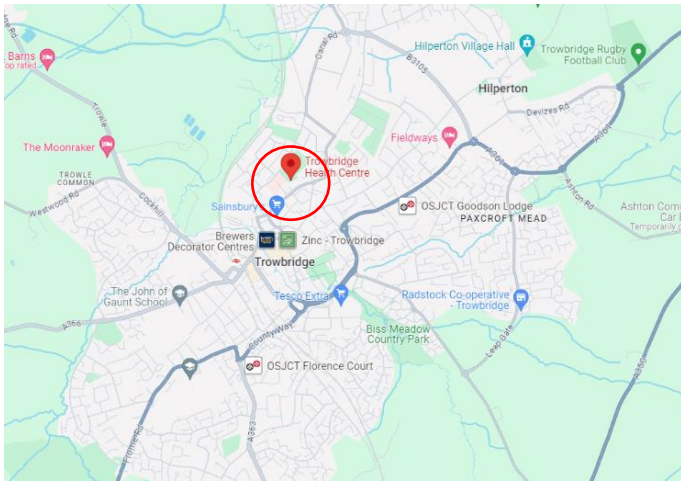
Bus stops near Trowbridge Health Centre:

- Community Hospital, 3 min walk. (68A, X77)

Bus lines to Trowbridge health Centre:

- 68A
  - X77
-

## Trowbridge health Centre on the Map:



Community  
Hospital bus stop.

