

Severn Way Surgery

Address:

Severn Way Surgery

Severn Way

Keynsham

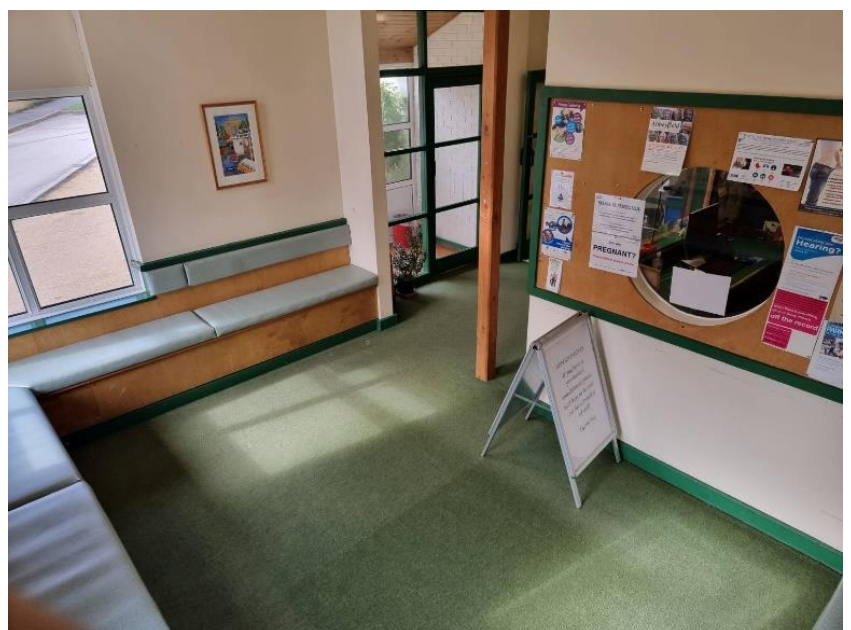
Bristol

BS31 1NU

Entrance:



Waiting area:



Accessibility:

- ✓ Wheelchair accessible – Restricted space for electronic chairs, alternative venue
Riverside Health Centre.
 - ✓ Disabled WC
 - ✓ Step free access
 - ✓ Car parking
 - ✓ Disabled parking
-

Eye Screening Appointment times

Morning:

8:30am – 11:40pm

Afternoon:

1:00pm – 3:30pm

If you're looking to book an appointment, please contact our admin team for dates available:



01225 582300



miul.administration@nhs.net

Bus routes

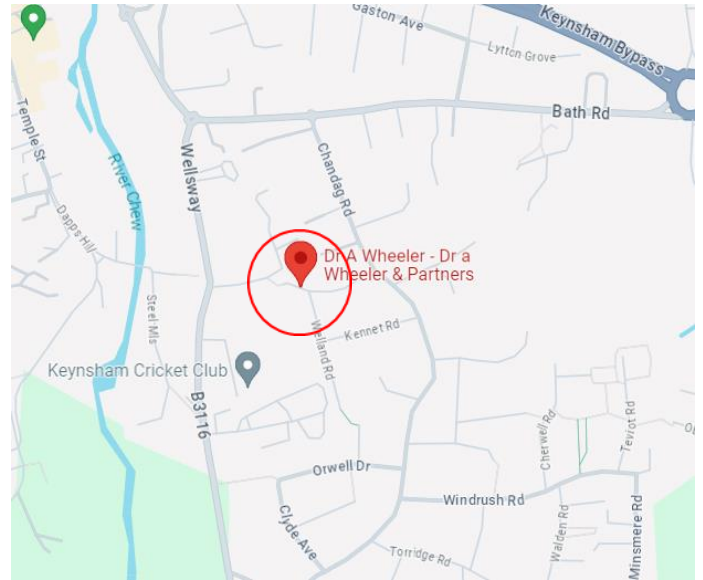
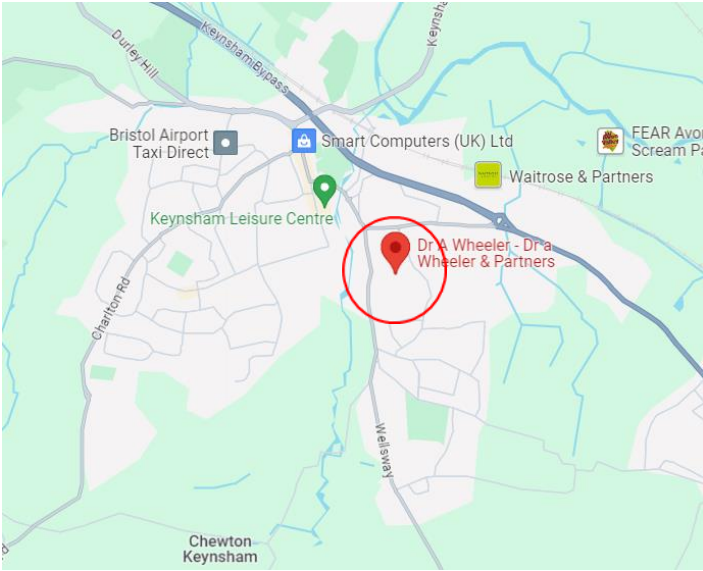
Bus stop near Severn way Surgery:

- Limekilns Close bus stop, 2 min walk. (522)
- Wellsway school bus stop, 3 min walk. (522)

Bus lines:

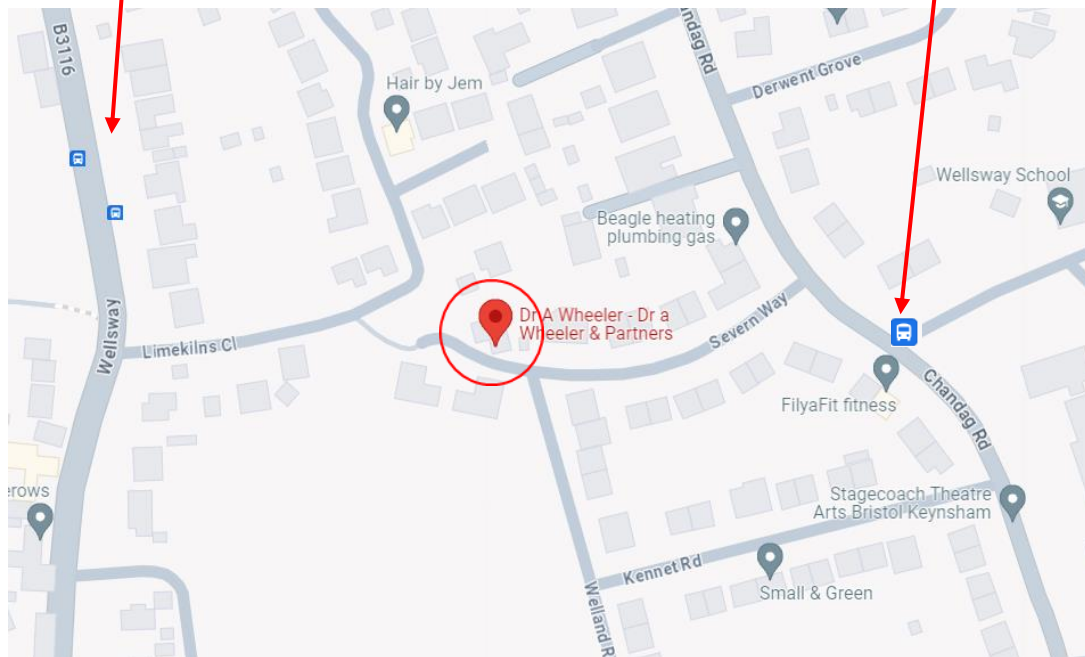
- 522
-

Severn Way Surgery on the Map:



Limekilns Close

Wellsway school bus stop.



NEC NEC Care