

## Salisbury Medical Practice

### **Address:**

Salisbury Medical Practice

Fisherton House

Fountain Way

Salisbury

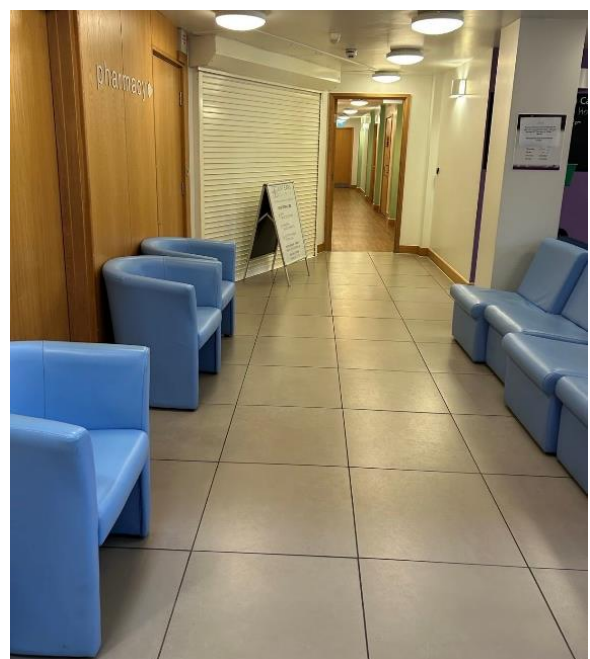
Wiltshire

SP2 7FD

### **Entrance:**



### **Waiting area:**



### **Accessibility:**

- ✓ Step free access
  - ✓ Wheelchair access
  - ✓ Disabled WC
  - ✓ Car parking
  - ✓ Disabled parking
  - ✓ Induction loop
  - ✓ Lift
- 

### **Eye Screening Appointment times**

Morning:

8:30am – 11:40pm

Afternoon:

1:00pm – 3:30pm

If you're looking to book an appointment, please contact our admin team for dates available:



01225 582300



miul.administration@nhs.net

---

### **Bus routes:**

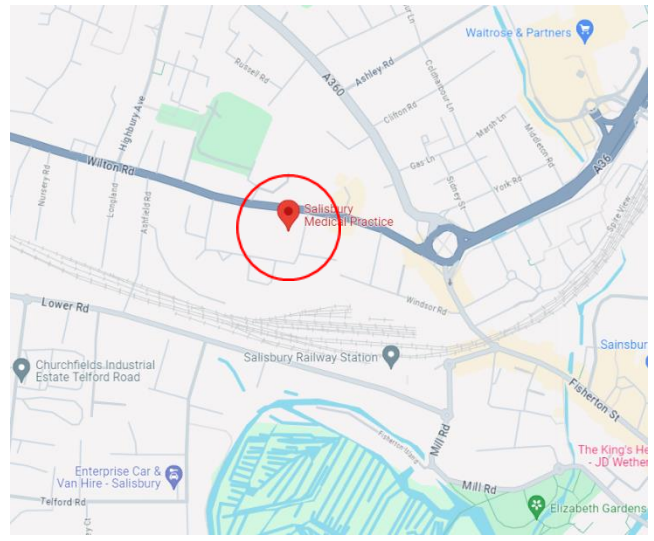
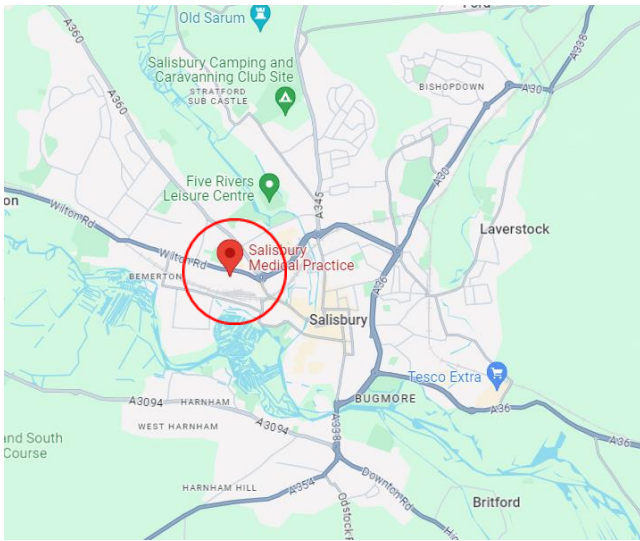
Bus stops near Salisbury Medical Practice

- Fountain Way bus stop, 1 min walk. (2, 24, 25, 26, 26A, 27, 56, 66, B1, PR3 Park&ride, R10, R3 RED, R8 red)

Lines:

- |      |       |                   |
|------|-------|-------------------|
| ➤ 2  | ➤ 26A | ➤ B1              |
| ➤ 24 | ➤ 27  | ➤ PR3 Park & Ride |
| ➤ 25 | ➤ 56  | ➤ R10             |
| ➤ 26 | ➤ 66  | ➤ R3 & R8 RED     |
-

## Salisbury Medical Practice on the Map:



Fountain Way bus stop

