

## Malmesbury Primary Care Centre

### **Address:**

Malmesbury Primary Care Centre

Priory Way

Malmesbury

Wiltshire

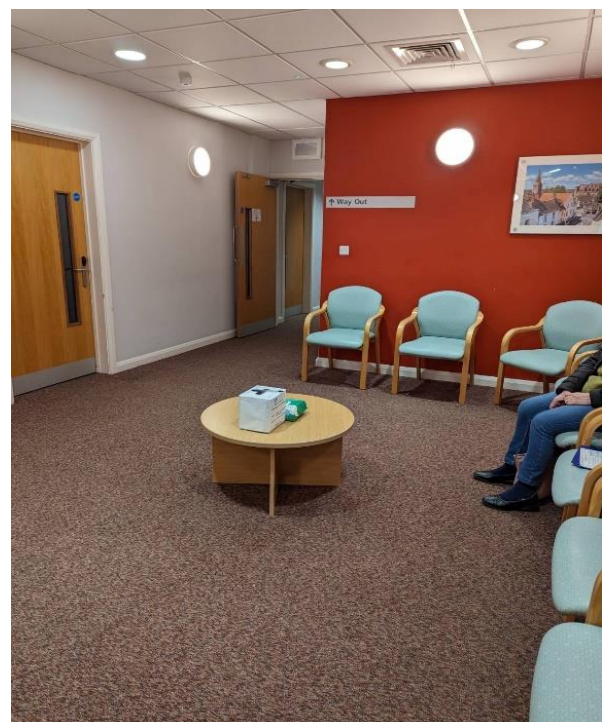
SN16 0FB

---

### **Entrance:**



### **Waiting area:**



## **Accessibility:**

- ✓ Wheelchair access
  - ✓ Step free access
  - ✓ Lift/Elevator
  - ✓ Induction loop
  - ✓ Disabled parking
  - ✓ Car parking
  - ✓ Cycle parking
- 

## **Eye Screening Appointment times**

Morning:

8:30am – 11:40pm

Afternoon:

1:00pm – 3:30pm

If you're looking to book an appointment, please contact our admin team for dates available:



01225 582300



[miul.administration@nhs.net](mailto:miul.administration@nhs.net)

---

## **Bus routes**

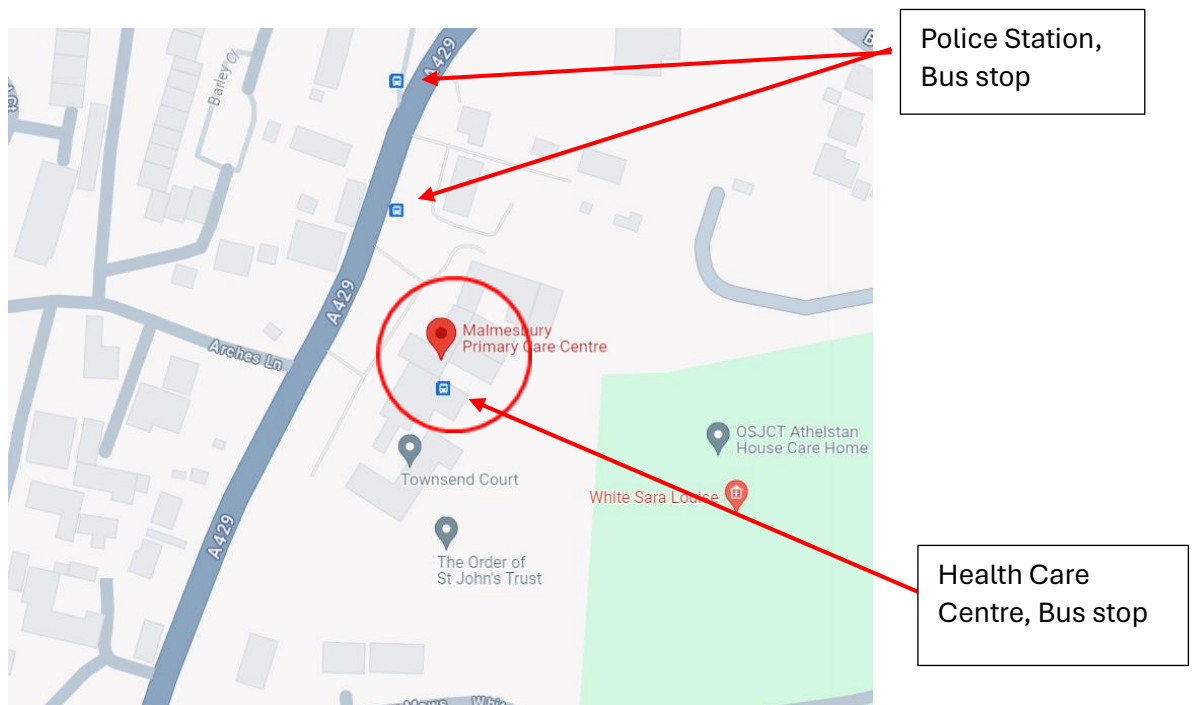
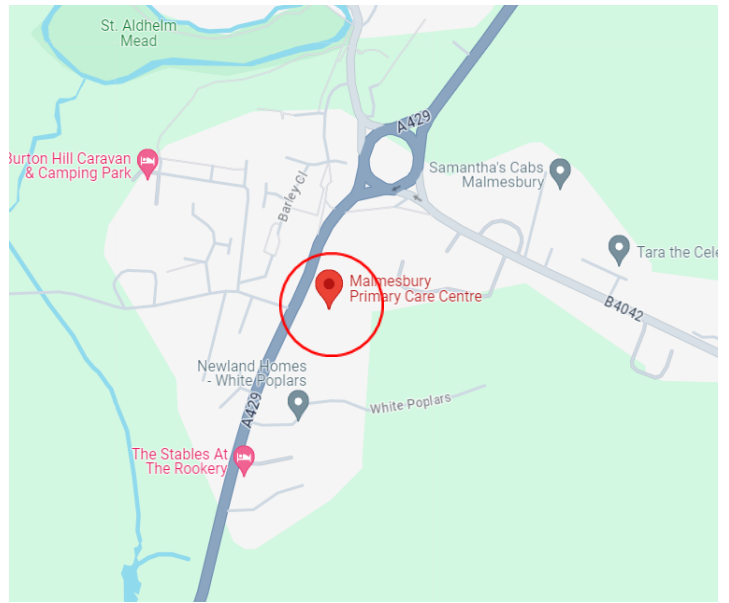
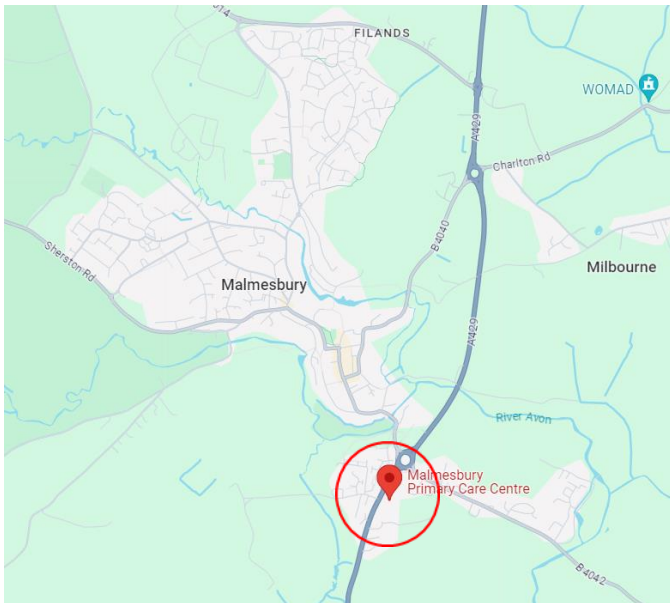
Bus stops near Malmesbury Primary Care Centre

- Health Care Centre bus stop, 1 min walk. (90)
- Police station, 1 min walk. (90, 99, x99, X79)

Bus lines:

- 90
  - 99
  - X99
  - X79
-

## Malmesbury Primary Care Centre on the Map



Police Station,  
Bus stop

Health Care  
Centre, Bus stop