

Elm Hayes Surgery

Address:

Elm Hays Surgery

Clandown Road

Paulton

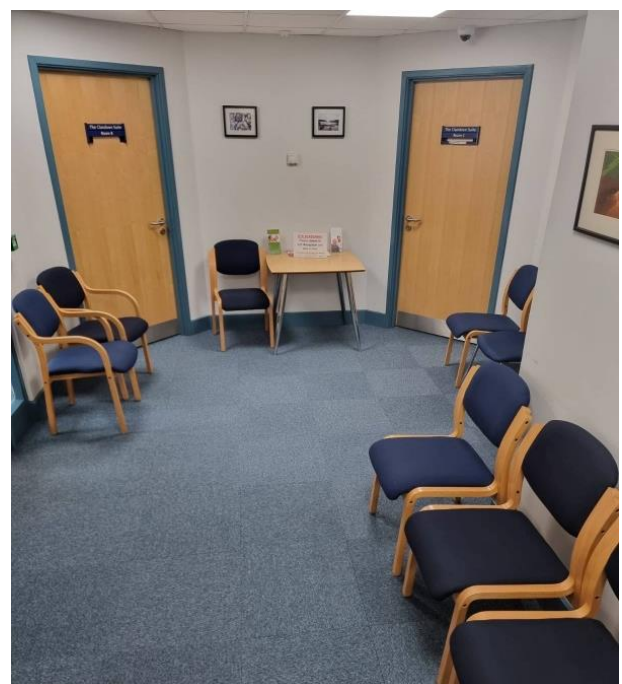
Bristol

BS39 7SF

Entrance:



Waiting area:



Accessibility

- ✓ Braille translation service
 - ✓ Disabled parking
 - ✓ Disabled WC
 - ✓ Induction loop
 - ✓ Step free access
 - ✓ Wheelchair access
 - ✓ Car parking
-

Eye Screening Appointment times

Morning:

8:30am – 11:40pm

Afternoon:

1:00pm – 3:30pm

If you're looking to book an appointment, please contact our admin team for dates available:



01225 582300



miul.administration@nhs.net

Bus routes

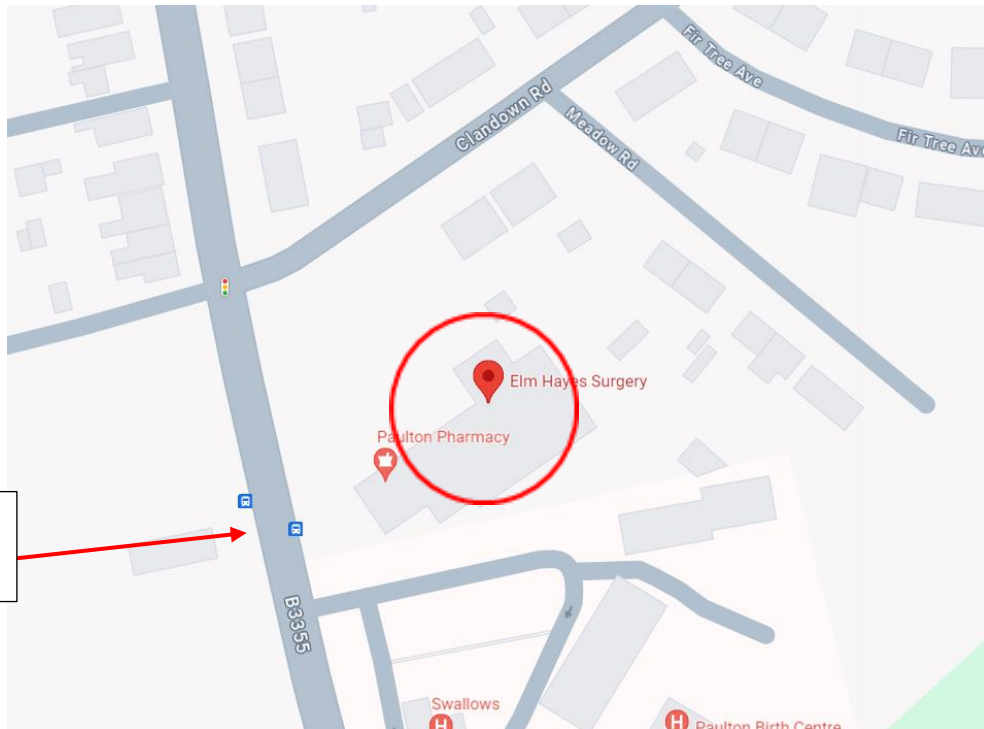
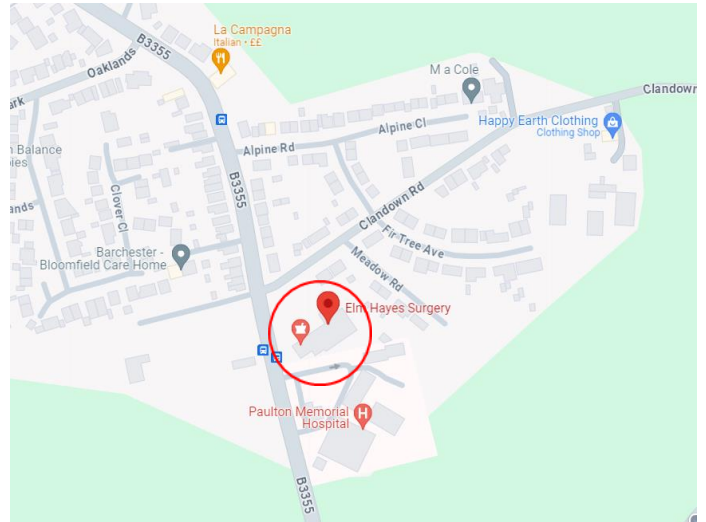
Bus stops near Elm Hayes Surgery:

- Paulton hospital, 1 min walk. (172, 522)

Bus lines:

- 172
 - 522
-

Elm Hayes Surgery on the Map



Paulton Hospital bus stop